



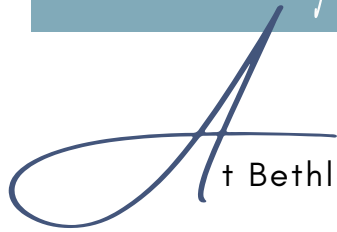
BETHLEHEM AKADEMIE

P R O S P E C T U S

The school behind the smile

CURRICULUM

The school behind the smile



At Bethlehem Akademie we follow the CAPS curriculum.

The CAPS curriculum is a single, comprehensive, and concise policy document introduced by the Department of Basic Education for all the subjects listed in the National Curriculum Statement for Grades R - 12.

These policies provide the content and assessment guidelines for a learner to be able to proceed to the next grade.

HOLISTIC EDUCATION

The school behind the smile



The *vision* of Bethlehem Akademie is to provide a safe, but daring community where children can be educated and developed holistically into future leaders.



Our

mission

is to grow and develop the body, mind and spirit optimally.

ETHOS

The school behind the smile

Christian Ethos

Everything we do at school is done from the perspective that every child is precious in the eyes of God. We believe that if a child understands their worth as a child of God and as a person with a calling, the sense of purpose is already implanted.

When people learn to perceive each other as children of God, it becomes easier to accept each other for exactly who we are. Our daily devotions and weekly praise and worship sessions allow learners to really spend time in His presence.

We are a family at school, we correct each other, love each other, accept each other.

Puer - Sermo - Mundi

Child - Word - World

Let's equip the child with the Word of God
to go into the world and build the Kingdom of God.

PHASE SPECIFIC EDUCATION

The school behind the smile

Barefeet Academy Baby to 5 years old

The learners use nature and surroundings to gather what they need for their class. Nature has more than enough opportunity for skill development, including cognitive, physical, social and emotional.

Grade R to Grade 3 *Foundation Phase*

Our main focus in this phase is to establish a good balance between the expected skills for further learning. We focus on all 9 intelligences in a very specialised manner, taking into consideration that the time to establish the correct level of skill development together with an innate love for learning, is very short. Once this window is lost, it is extremely difficult to foster a desire to learn and develop. We offer a range of activities included in the school fees which is presented by specialists in the respective fields.

Intermediate Phase Grade 4 to Grade 7

This phase mainly focuses on the child's ability to deal with information. In an era where gathering information is not difficult at all, we wish to teach our learners how to do this safely, without exposing themselves to unwanted content and platforms which can cause hurt. Learners are very susceptible to negativity towards schooling which makes it all the more important to make learning fun. Themed classes allow for content integration, keeping a flow and holding interest as well as developing sensical skills.

POLICY ON CLASS SIZES

The school behind the smile

Class sizes

We feel strongly about having fewer learners in a classroom in order for the teachers to be able to reach every child, not only academically. We value the importance of feeling safe, welcome, loved and respected. Smaller groups make it possible to know every child personally and intervene in the areas where needed.

It makes sense that the school fees will reflect the fact that we accept less learners.

There are certain activities included in the different phases. It differs because of the shift in focus. These activities are paid by the school and therefore it is compulsory for all learners. These activities were chosen with great care. It helps promote development across all areas and it speaks to all nine intelligences.

The benefit of smaller classes with small ratios are confirmed by many studies done globally. Considering the conclusions from various studies and the financial viability, we have decided on ratios as stipulated below.

Barefeet Academy

The school fee includes **Worship Dancing** and **Little Turtles (Kinderkinetics)**.
Considering various studies, we have decided on the following child to caretaker ratios.

Age	Ratio	Class size
1-2	4:1	8
3-5	7:1	14

SCHOOL FEES

The school behind the smile

Foundation Phase

The school fees include: **Sports uniform (Winter and Summer), Swimming, Little Turtles (Kinderkinetics), EQ4Kids, Worship Dancing (Grade R and 1), Boxing (Grade 2 and 3), Bi-weekly farming expeditions and Specialised arts classes, Class music, etc.**

The most beneficial ratio for foundation phase learners is 18:1. We do not accept more than 20 learners in a class.

Intermediate Phase

The school fees include: **Sports uniform (Winter and Summer), Swimming, Fitness training, all the materials needed for farming, robotics and coding necessities, exhibitions and trips within the area, etc.**

The most beneficial ratio for foundation phase learners is 18:1. We do not accept more than 20 learners in a class.

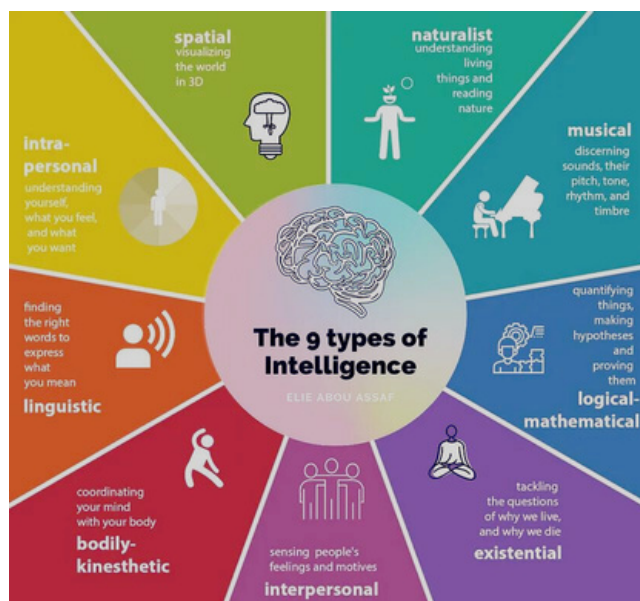
THE NINE INTELLIGENCES

The school behind the smile

Every person was created with different strengths and weaknesses. The traditional approach to teaching assumes that the majority of learners can learn similar content in a similar way and that a standardized measure of assessment will test the actual skill in each child. More recent studies have shown that we ought to be more open minded in terms of teaching instruction and assessment.

Prof. Howard Gardner originally referred to seven distinct intelligences, this then later grew into the nine intelligences as listed below. With our holistic approach to teaching, we wish to acknowledge the diverse nature of our students' minds and therefore the diverse way their minds accept, remember, understand and apply knowledge. The attempt of reaching each child makes them feel valued, the product of learners feeling valued is learners who want to improve, develop and learn.

Creating lifelong learners is probably one of the biggest tasks for a teacher. With our welcoming and family-like environment, we wish to accomplish this very difficult task. Happy children can learn.



It is also true that if one learner is exposed to the content in different ways, the knowledge is reinforced and becomes more understandable.

PLANNED DEVELOPMENT

The school behind the smile

